



## Ankle Syndesmosis Repair System

with Acu-Sinch® Knotless

**Superior Suture Strength and Reduction Reliability** in load-to-failure testing compared to leading competitors.<sup>1</sup>



**Fewer Steps and No Fiddle Factor** offers a simple technique that eliminates the need to toggle sutures and does not require a medial incision.



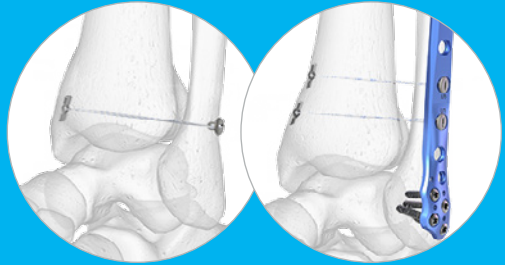
1. Internal testing on file at Acumed

# Simplify Your Flexible Syndesmotic Fixation

# Ankle Syndesmosis Repair System with Acu-Sinch® Knotless

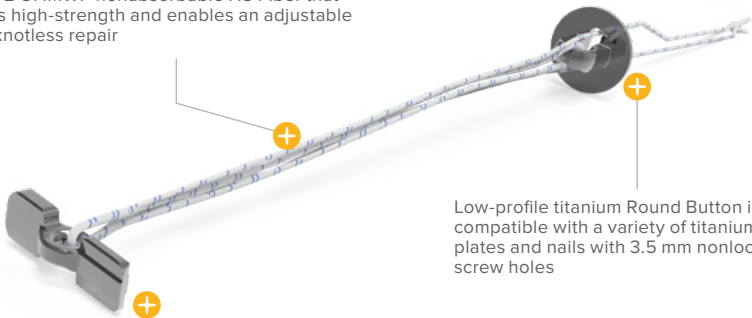
Designed in conjunction with Alastair Younger, MB, Ch.B., M.Sc., Ch.M., FRCS(C); Selene Parekh, MD, MBA; and Steven Morgan, MD, the Acu-Sinch Knotless Implant enables the dynamic stabilization of laxity or syndesmotic disruptions to the tibiofibular joint.

The Acu-Sinch Knotless buttons may be augmented with a washer or may be used in conjunction with the Acumed and OsteoMed® fibula fracture fixation plates and intramedullary nails with 3.5 mm nonlocking screw holes. Our patented release mechanism gives the user control to place the medial button subcutaneously without the need for direct visualization.



## System Features

Self-locking FlexBraid™ suture is made of #2 UHMWP nonabsorbable HS Fiber that is high-strength and enables an adjustable knotless repair



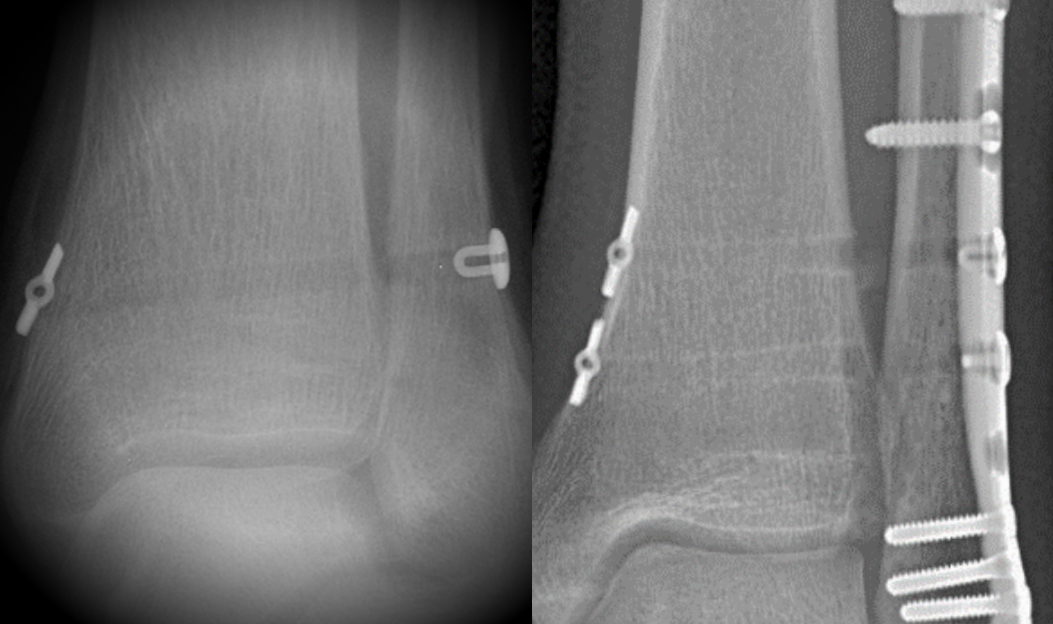
Titanium Flip Button is designed to pass through a 3.5 mm bone tunnel, plates, or intramedullary nails with 3.5 nonlocking holes

Low-profile titanium Round Button is compatible with a variety of titanium fibula plates and nails with 3.5 mm nonlocking screw holes



### Washers

Slotted titanium washer is designed for assembly over the suture after the Acu-Sinch Knotless has been deployed, for increased surface area on the bone

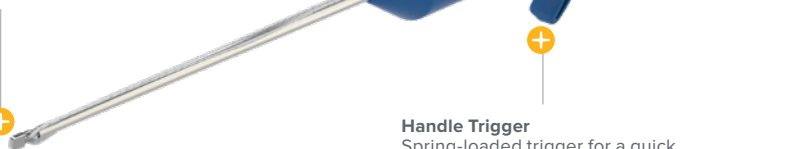


View More X-rays

[go.acumed.net/ASK-xrays](http://go.acumed.net/ASK-xrays)

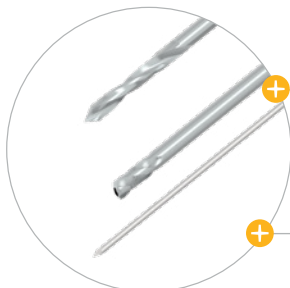
## System Features [continued]

Patented Flip Button design eliminates the need for a medial incision



### Handle Trigger

Spring-loaded trigger for a quick one-step Flip Button delivery

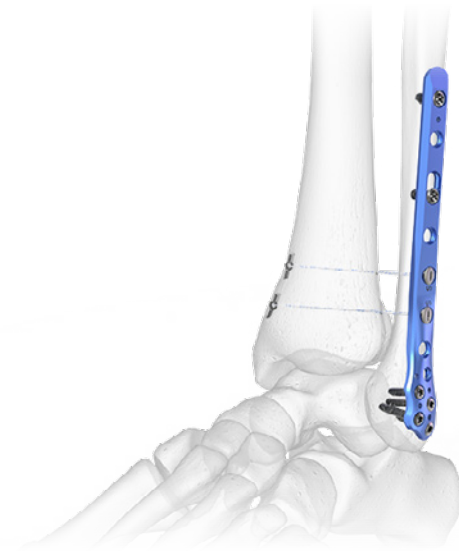


### Drill Options

A solid 3.5 mm single-use drill is provided in the Acu-Sinch kit and an optional 3.5 mm cannulated drill and K-wire used to confirm trajectory prior to drilling are available separately

To implant Acu-Sinch Knotless through the Fibula Nail 2, a 3.5 mm Long Drill is available to provide streamlined, single-step drilling

Contact Your Local Sales Rep for More Information



Learn More About Acu-Sinch® Knotless

Simplify Your Flexible  
Syndesmosis Fixation  
[go.acumed.net/ASK](https://go.acumed.net/ASK)



[www.acumed.net](https://www.acumed.net)

Acumed USA Campus  
5885 NE Cornelius Pass Road  
Hillsboro, OR 97124  
+1.888.627.9957

OsteoMed USA Campus  
3885 Arapaho Road  
Addison, TX 75001  
+1.800.456.7779

Acumed Iberica Campus  
C. Proción, 1  
Edificio Oficor  
28023 Madrid, Spain  
+34.913.51.63.57

**TLB10-01-B** | Effective: 2024/04 | © 2024 Acumed® LLC

OsteoMed® LLC is a wholly owned subsidiary of Acumed LLC.  
OsteoMed is a registered trademark of OsteoMed LLC.

Acumed® and Acu-Sinch® are registered trademarks of Acumed LLC.