

## Product Overview



Acu-Loc® Wrist Plating System  
Trusted Over One Million Times



# Acu-Loc® Wrist Plating System Trusted Over One Million Times

The Acu-Loc Wrist Plating System is a comprehensive plating system for treating a wide range of fracture patterns. It has a patented screw designed to compress dorsal fragments and innovative instrumentation. These are just a few of the reasons Acu-Loc products are used and trusted by orthopaedic surgeons across the globe.

## Acu-Loc Milestones

Acu-Loc Volar Distal  
Radius Plate Launch

2004



- ▶ The first anatomic volar distal radius plate on the market
- ▶ First to offer a radiolucent monoblock targeting guide



Acu-Loc Plate Extension

2008



- ▶ Launched Dorsal Radius Lock Plates
- ▶ Debuted Volar Distal Ulna Plates
- ▶ Added Extra-Articular Plates



Acu-Loc 2 Launch

2010



- ▶ Advanced instrumentation like a patented target guide and plate positioning handle aid in plate placement and fracture reduction
- ▶ Frag-Loc® two-piece compression screw for reducing difficult dorsal fragments





For more information:  
[go.acumed.net/1Million](https://go.acumed.net/1Million)  
888.627.9957



Acu-Loc 2 Variable Angle  
Plating System Launch

2013



- ▶ Variable Angle Locking Screws allow for a variance of 5 mm dorsally

Extended Screw  
Option

2020



One Million  
Implants Sold

2022



Avulsion Hook  
Plate Launch

2024



- ▶ Extended fixation and articular buttress
- ▶ Ultra-thin 0.8 mm profile

Narrow Wrist Spanning  
Plates Launch

2024



- ▶ 34% narrower\* to aid soft-tissue navigation, 74% stronger† to withstand increased loads

\*Than previous generation  
†Data on file vs leading competitor



## Acumed® Acu-Loc® 2 Wrist Plating System

A comprehensive system to treat fractures of the distal radius and distal ulna, the Acu-Loc 2 Wrist Plating System offers Standard, Variable-Angle Locking, Fragment-Specific, and Extension Plates to address a variety of fracture patterns. The original Acu-Loc Volar Distal Radius Plate has been a market leader in fracture fixation since 2004. The Acu-Loc 2 Wrist Plating System introduced a patented cannulated compression screw and instruments designed to assist surgeons with plate placement and fracture reduction.

**Optional Avulsion Hook Plate**  
extends fixation to stabilize  
distal fragments

**Suture Holes**  
Aid in fixation of small  
articular fragments



## Proximal and Standard Volar Distal Radius (VDR) Plates

These plates offer intra-articular or extra-articular fracture management while restoring original geometry with a precontoured plate design.

### 2.3 mm Fixed-angle Screws and Pegs

For targeted subchondral bone support, including two dedicated styloid screws

### Fixed-angle Diverging Diaphyseal Screws

Designed to provide pullout resistance

### Streamlined Distal Radius Fixation

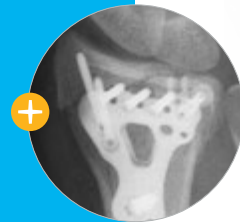
3.5 and 2.7 mm screws are available for the shaft. The 2.7 mm screws use the 2.0 mm Quick Release Drill, designed to streamline distal radius fixation

## Proximal and Standard Volar Distal Radius (VDR) Plates

### Frag-Loc® Compression Screw

The two-part, cannulated Frag-Loc Compression Screw is designed to reduce dorsal fragments to the Acu-Loc 2 VDR Plates, Distal Radius Fragment-Specific (DRFS) Plates, Volar Lunate Suture Plate, Acu-Loc VDR Plates, and Acu-Loc EX Plates

Incorporating the Avulsion Hook Plate provides additional buttress to dorsal rim fragments.

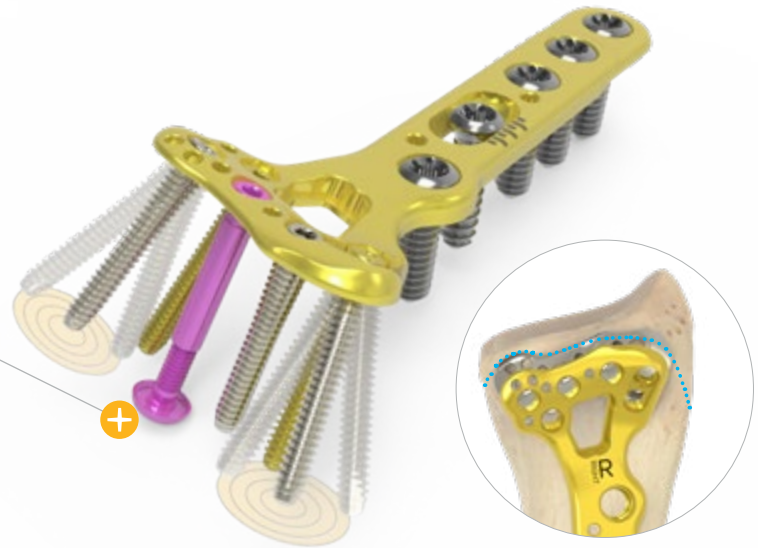


### Variable-Angle Locking Screws

2.3 mm Variable-Angle Locking Screws can be used in the distal styloid hole of the Standard VDR Plates and in all of the distal holes of the Proximal VDR Plates



Standard VDR Plate with VAL Screw in distal styloid hole



Proximal VDR Plates



Standard Volar Distal Radius (VDR) Plates

**Frag-Loc® Compression Screw**  
A two-part cannulated screw designed to compress dorsal fragments



## Modular Extension Plate Attachments

Offer surgeons the option to extend any of the long and wide Volar Distal Radius Proximal Plates up to 176 mm

## Narrow Wrist Spanning Plates

Designed to address complex distal radius fractures, serving as fixators to hold the wrist in distraction and provide ligamentotaxis while the distal radius heals



Modular Extension Plate Attachments



Wrist Spanning Plates

## Distal Radius Fragment Specific (DRFS) Plates

### Radial Styloid Plate

Two unicortical distal screws diverge to provide subchondral bone support, with one screw targeting the dorsal rim of the sigmoid notch and the other targeting the volar rim



### Volar Lunate Suture Plate

Sutures may be placed through the volar capsule and holes in the plate for fixation of very small bone fragments in the volar ulnar corner of the radius



Distal Radius Fragment Specific Plates

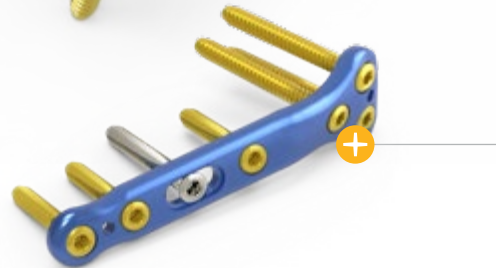




**Volar Distal Ulna (VDU) Plates**  
Designed specifically for periarticular fractures of the distal ulna, the plate features screw positioning and angulation that targets distal fragments of the ulnar head and neck



**Dorsal Rim Buttress Plates**  
The plate is positioned on the dorsal ulnar side of the radius and extends radially to support dorsal rim comminution and the radial styloid



**Dorsal Lunate Plates**  
Used for stabilizing fracture patterns that involve the dorsal lunate facet of the distal radius and the sigmoid notch, providing support to the lunate facet

## Acu-Loc Dorsal Plates

Offer a solution to treat distal radius fractures that need to be addressed from the dorsal side



## Acu-Loc Extra-articular (EX) Plates

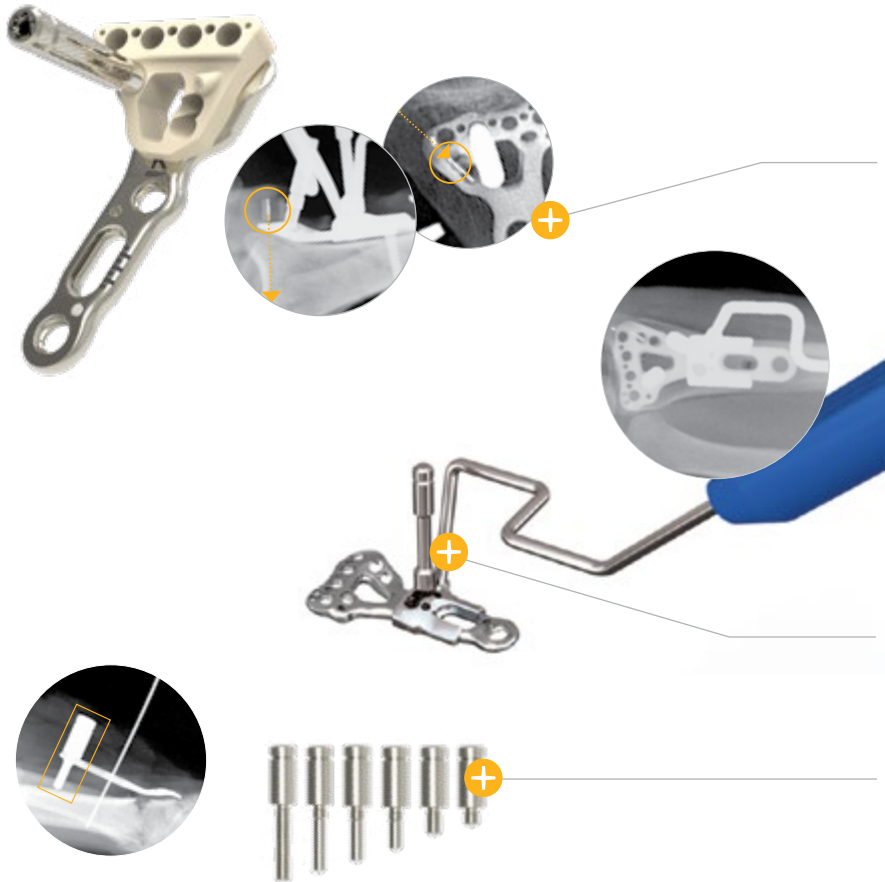
2.3 mm locking variable-angle screws may be used in the distal row of the Acu-Loc EX Plates. These screws are provided to aid in the capture of specific fragments or to accommodate variations in patient anatomy



EX Plates



Acu-Loc Dorsal Distal Radius Plate



## Key Instruments

### Cannulated Locking Bolt and Targeting Guide

Patented Radiopaque Positioning Posts aid in plate and screw positioning to avoid the joint space

### VDR Plate Positioning Handle

Assists with Acu-Loc 2 VDR plate placement while keeping the surgeon's hands out of the fluoroscopy beam

### Kickstand Posts

Threaded plate posts are designed to assist with distal radius volar tilt correction by lifting the proximal end of the plate away from the radial shaft to form a stable platform



**Acu-Loc 2 Volar Plate and Avulsion Hook Plate**  
Lateral view, distal radius fracture with  
volar ulnar corner fragment



**Acu-Loc 2 Wrist Plating System**  
Volar AP view, distal radius fracture,  
Acu-Loc 2 volar plate



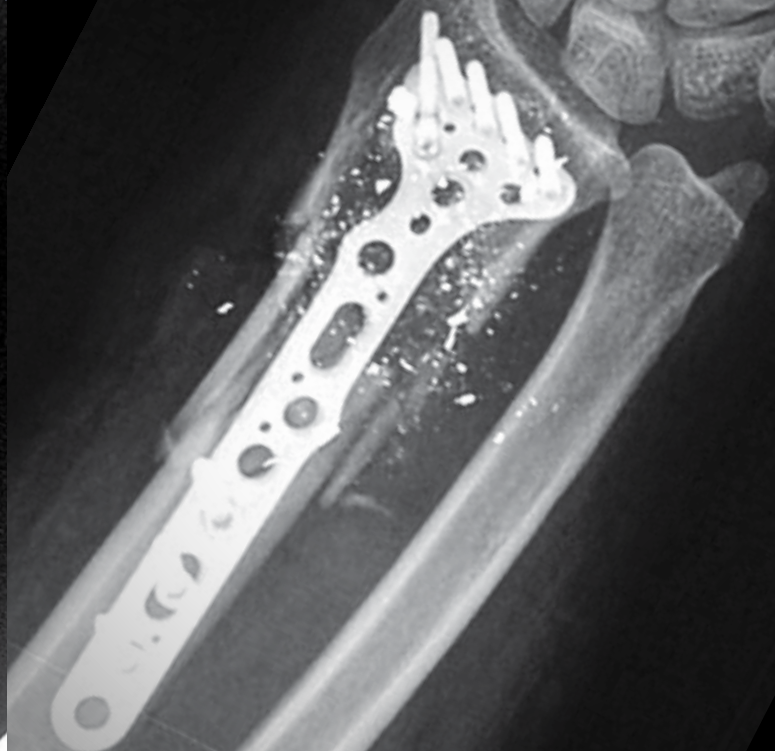
**Acu-Loc DRFS Plates**  
Dorsal Rim Buttress plate



**Acu-Loc 2 DRFS Radial Styloid Plate and Dorsal Lunate Plate**  
Distal radius fracture, oblique view



**Acu-Loc 2 Volar Plate  
with VDR Plate Positioning Handle**



**Acu-Loc 2 Volar Plate  
with Modular Extension Plate**



Acu-Loc 2 Narrow Wrist Spanning Plate



Acu-Loc 2 Narrow Wrist Spanning Plate



[www.acumed.net](http://www.acumed.net)

Acumed Oregon Campus  
5885 NE Cornelius Pass Road  
Hillsboro, OR 97124  
+1.888.627.9957

Acumed Texas Campus  
3885 Arapaho Road  
Addison, TX 75001  
+1.800.456.7779

Acumed Iberica Campus  
C. Proción, 1, Edificio Oficor  
28023 Madrid, Spain  
+34.913.51.63.57

**HNW40-09-G** | Effective: 2024/09 | © 2024 Acumed® LLC  
Patent Nos. 8,425,574 · 8,425,575 · 8,518,090 · 8,523,919 · 8,652,180



Learn more about the  
**Acu-Loc 2 product family**  
[go.acumed.net/Acu-Loc2](http://go.acumed.net/Acu-Loc2)

These materials contain information about products that may or may not be available in any particular country or may be available under different trademarks in different countries. The products may be approved or cleared by governmental regulatory organizations for sale or use with different indications or restrictions in different countries. Products may not be approved for use in all countries. Nothing contained on these materials should be construed as a promotion or solicitation for any product or for the use of any product in a particular way which is not authorized under the laws and regulations of the country where the reader is located. Specific questions physicians may have about the availability and use of the products described on these materials should be directed to their particular local sales representative. Specific questions patients may have about the use of the products described in these materials or the appropriateness for their own conditions should be directed to their own physician.

Acumed®, Acu-Loc® 2, and Frag-Loc® are registered trademark of Acumed LLC